

## NH fuse switch-disconnector size 00, 160 A, panel mounting (33 200)



### Description

#### Article

Part No.: 33 200

QUADRON® Panel

NH fuse switch-disconnector size 00, 160 A, panel mounting  
connection screw M8

#### System

Mounting plate

Product group 09

Subgroup 03

pack size 1

EAN 4021267332006

#### Advantages of the product

For safe connection of the leads, the shock protection is split into 2. Self-closing inspection holes are available in the cover.

eCl@ss 6.1 27142108

eCl@ss 7.1 27142108

ETIM 4.0 EC001040

ETIM 5.0 EC001040

## Approvals

### Standards

IEC 60947-1:2007 + A1:2010 + A2:2014

IEC 60947-3:2008 + A1:2012

### Approvals

IEC (CB), UL, Germanischer Lloyd, CCC



for UL feeder circuits >250V

Type number: LTS-00

UL file: E230163, UL category (for USA): IZLT2 <http://www.ul.com>

CCC certificate: 2004010302117250

## Product data

### Electrical data

Rated current (IEC): 160 A

Rated voltage (IEC) AC: 690 V

Rated voltage (IEC) DC: 440 V

Rated current (UL): 160 A

Rated voltage (UL) AC: 600 V

Utilisation category AC-23B (400V)  
AC (IEC 60947-3) : AC-23B (500V/125A)  
AC-22B (690V)  
AC-21B (690V)  
AC-20B (1000V) at pollution degree 2

visible information required if used at more than 690V AC: do not switch under load

Utilisation category DC specifications: 2 current paths (L1,L3) in series  
DC (IEC 60947-3) : DC-22B (220V)  
DC-22B (440V/125A)  
DC-21B (440V)  
DC-20B (1000V) at pollution degree 2

visible information required if used at more than 440V DC: do not switch under load

Power dissipation:

The power dissipation at a typical load of 80% of the rated current results to 4.5 W.  
(The power dissipation for operation with rated current would be 7 W.)

rated isolation voltage  $U_i$  (AC): 800  
V  
Rated surge voltage  $U_{imp}$  : 6 kV  
max. permitted voltage (IEC) AC: 800  
V  
max. permitted voltage (IEC) DC: 800  
V

cond. rated short-circuit current with fuses: 50 kA / 690V  
approved with fuse links of characteristics: gG

SCCR: 100 kA

for fuse links IEC 60269-2-1 (I) / DIN VDE 0636-201 size 00 up to 12W power dissipation

Special operating conditions corresponding to IEC / EN 61439-1 may yield to faulty activations of pilot switches and fuse monitors. The operating conditions have to be considered for the analysis of status signals.

In accordance with the specified AC and DC switching properties and in consideration of the overload conditions, the distances to earthed metal parts given below are to be adhered to. - top 150mm, side 55mm

When used as a disconnecter, the spacings can be ignored.

Degree of protection IP30 at front, degree of protection near terminal depends on installation

### **Mechanical data**

W x H x D: 106 x 200 x 83

Weight: 77.7 kg/100

Poles: 3-pole

front degree of protection: IP30

### **Terminal points**

screw M8

Accessories:

Clamp connection: Cu 1.5-70mm<sup>2</sup> s(r), f+AE; la. Cu 12x1-10; 3Nm torque

single wedge clamp terminal: Cu, Al\* 16-70mm<sup>2</sup> s(r), s(s), f+AE; 3Nm torque

tunnel terminal 3x Cu 1.5-16mm<sup>2</sup> s(r), f+AE; 3Nm torque

\*Connections not maintenance-free if aluminium conductors are used.

### **Material properties**

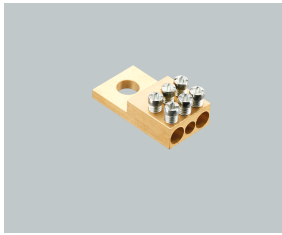
Main body: temperature stability 125°C,  
self-extinguishing in acc. to UL 94,  
creepage resistance CTI 600,  
halogen-free

Shock protection cover: temperature stability 125°C,  
self-extinguishing in acc. to UL 94,  
creepage resistance CTI 200

Handle: temperature stability 125°C,  
self-extinguishing in acc. to UL 94,  
creepage resistance CTI 200

Contacts: spring-loaded copper contacts, silver plated

## Accessories



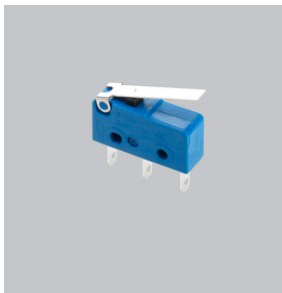
**01 182**  
tunnel terminal  
1 x 2,5 - 16mm<sup>2</sup> + 2 x 2,5 - 25mm<sup>2</sup>  
NH 00



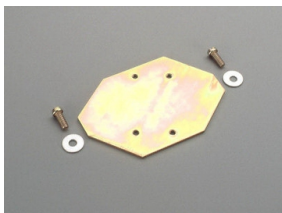
**03 727**  
Clamp connector  
1,5 - 70 mm<sup>2</sup>  
size 00



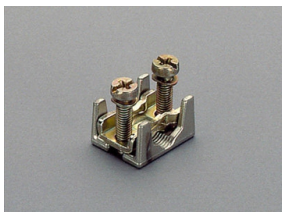
**03 849**  
lid interlock  
for sealing wire  
Size 00



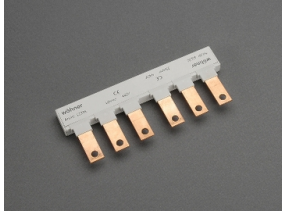
**33 156**  
pilot switch  
changeover 250 V AC / 5 A; 30 V DC / 4 A



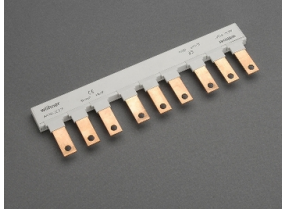
**33 193**  
rapid mounting set  
for 2 DIN rails, rails centre distance 125 mm or 150 mm  
size 00



**33 224**  
prism terminal, single, for Cu and Al cables  
16 - 70 mm<sup>2</sup>  
NH 00

**33 376**

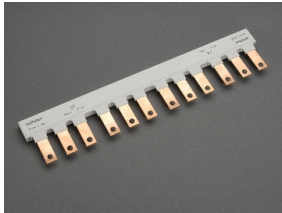
comb type busbar, 3-pole, for 2 NH fuse switch disconnectors  
size 00, 33200  
35 mm<sup>2</sup>

**33 377**

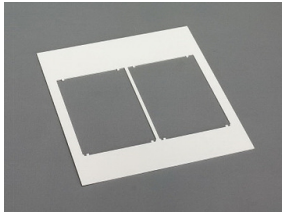
comb type busbar, 3-pole, for 3 NH fuse switch disconnectors  
size 00, 33200  
35 mm<sup>2</sup>

**33 378**

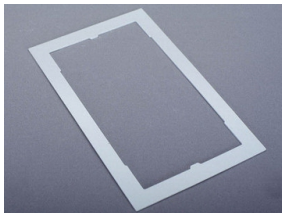
connecting terminal, front connection  
for 3-pole comb-type busbar 35 mm<sup>2</sup>, suitable for NH-fuse switch  
disconnector size 00 with box terminal  
25 - 95 mm<sup>2</sup>

**33 392**

comb type busbar, 3-pole, for 4 NH fuse switch disconnectors  
size 00, 33200  
35 mm<sup>2</sup>

**78 105**

Trim frame, double  
232 x 210, not for 33221, 33222  
size 00

**78 893**

Trim frame, single  
130 x 210, not for 33221, 33222  
size 00

**79 811**

cover for cable lugs, attachable top/bottom  
for 33 200, 33 208, 33 329, 33 394, 33 398, 33 420  
NH 00