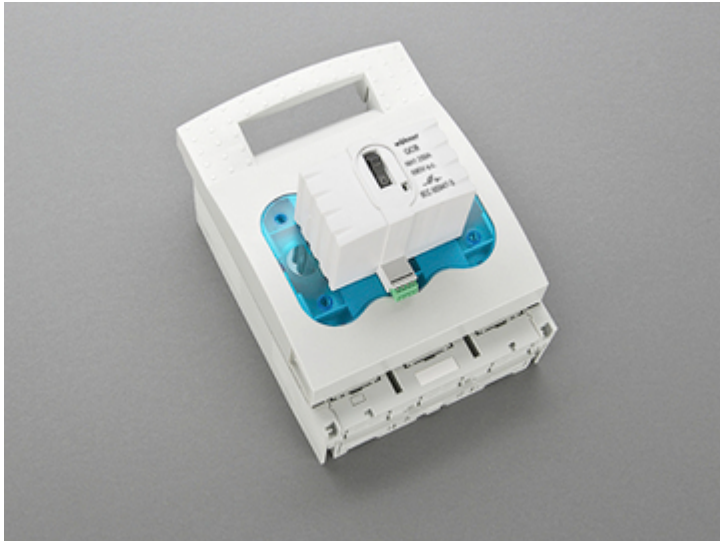


NH fuse switch-discon. size 1, 250 A, panel mounting (33 149)



Description

Article

Part No.: 33 149

QUADRON® Panel

NH fuse switch-discon. size 1, 250 A, panel mounting

connection screw M10

with electromechanical fuse monitoring

System

Mounting plate

Product group 09

Subgroup 07

pack size 1

EAN 4021267331498

Advantages of the product

For safe connection of the leads, the shock protection is split into 2.

Self-closing inspection holes are available in the cover.

eCl@ss 6.1 27142108
eCl@ss 7.1 27142108
ETIM 4.0 EC001040
ETIM 5.0 EC001040

Approvals

Standards

IEC 60947-1:2007 + A1:2010 + A2:2014
IEC 60947-3:2008 + A1:2012

Approvals

IEC (CB), UL, VDE



for UL feeder circuits >250V

Type number: QCB-NH1

UL file: E230163, UL category (for USA): IZLT2 <http://www.ul.com>
CCC certificate: 2012010302563561

Product data

Electrical data

Rated current (IEC): 250 A
Rated voltage (IEC) AC: 690 V
Rated voltage (IEC) DC: 250 V

Rated current (UL): 250 A
Rated voltage (UL) AC: 600 V

Utilisation category AC-22B (400V)
AC (IEC 60947-3) : AC-23B (400V/160A)
AC-21B (690V)

to obtain a higher utilisation category the product can be retrofitted with arcing chambers (see accessories)

Utilisation category DC specifications: 2 current paths (L1,L3) in series
DC (IEC 60947-3) : DC-20B (250V)

Power dissipation:

The power dissipation at a typical load of 80% of the rated current results to 8.3 W.

(The power dissipation for operation with rated current would be 13 W.)

rated isolation voltage U_i (AC): 800
V

Rated surge voltage U_{imp} : 6 kV

max. permitted voltage (IEC) AC: 690
V

max. permitted voltage (IEC) DC: 250
V

cond. rated short-circuit current with fuses: 80 kA / 690
V

approved with fuse links of characteristics: gG

SCCR: 100 kA

for fuse links IEC 60269-2-1 (I) / DIN VDE 0636-201 size 1 up to 23W power dissipation, with grip lugs under voltage

Special operating conditions corresponding to IEC / EN 61439-1 may yield to faulty activations of pilot switches and fuse monitors. The operating conditions have to be considered for the analysis of status signals.

Entsprechend den angegebenen AC- und DC- Schalteigenschaften und unter Berücksichtigung der Überlastbedingungen, sind gewisse Abstände zu geerdeten Metallteilen einzuhalten. Nähere Informationen auf Anfrage.

Bei Dauerbetrieb von mehreren Geräten nebeneinander ist der Bemessungsbelastungsfaktor nach VDE 0660 Teil 500 / EN60439-1, Tabelle 1 zu beachten.

Fuse monitoring:

rated operating voltage

AC 24-690V, DC 24-250V

potential-free opener and closer:

AC-15 24V/2A, (230V* 0.5A)

DC-13 24V/1A, 60V 0.15A

*pollution degree 2, surge category II

auxiliary energy not required,

for further information, see assembly manual

Mechanical data

W x H x D: 184 x 243 x 187

Weight: 255 kg/100

Poles: 3-pole

front degree of protection: IP30

Terminal points

screw M10

Material properties

Main body: temperature stability 125°C,
self-extinguishing in acc. to UL 94,
creepage resistance CTI 600,
halogen-free

Shock protection cover: temperature stability 125°C,
self-extinguishing in acc. to UL 94,
creepage resistance CTI 200

Handle: temperature stability 125°C,
self-extinguishing in acc. to UL 94,
creepage resistance CTI 200,
halogen-free

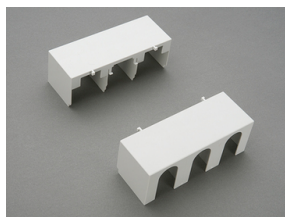
Contacts: spring-loaded copper contacts, silver plated

Version

Variant without fuse monitoring: 33 201

Variant with electronic fuse monitoring: 33 330

Accessories



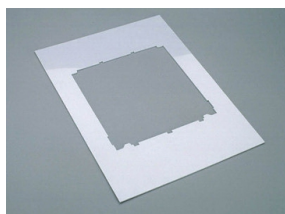
33 142

cover for cable lugs, top/bottom attachable
for NH fuse switch disconnecter size 1



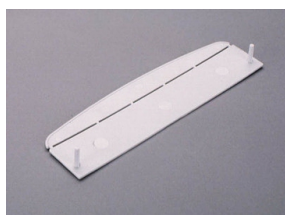
33 145

prism terminal, double, for Cu cables
2x 35-70 mm²
size 1



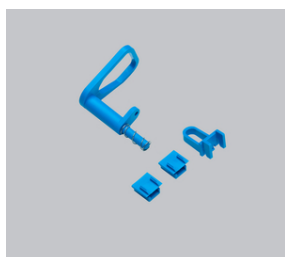
33 152

Trim frame
215 x 330
size 1



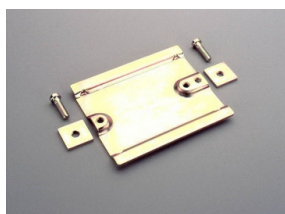
33 155

barrier for handle for NH fuse-switch disconnecter size 1-3
for closing of handle area from rear



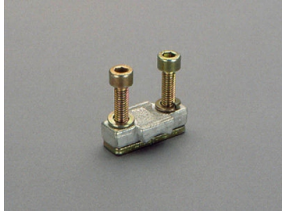
33 157

lid interlock
for sealing wire or 3 padlocks with shackle of 4-7 mm
Size 1 - 3

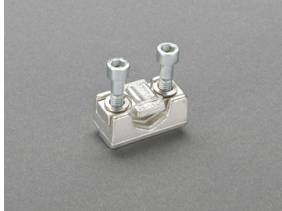


33 158

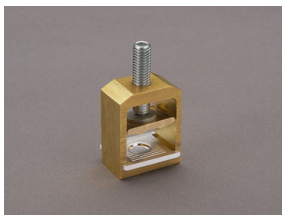
rapid mounting set
for 2 DIN rails, rails centre distance 125 mm or 150 mm
size 1 - 2



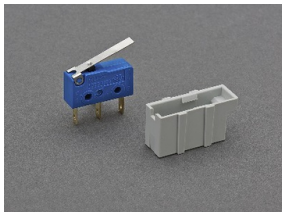
33 163
clamp connector for Cu cables
70 - 150 mm²
size 1



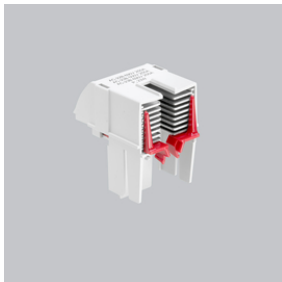
33 166
prism terminal, single, for Cu and Al cables
35 - 150mm²
size 1



33 909
box terminal for Cu cables
35 - 150 mm²



33 917
pilot switch
changeover 250 V AC / 5 A; 30 V DC / 4 A
Size 1



33 918
arcing chamber
retrofit package for higher utilisation category
for QCB-NH1