

## NH fuse switch-disconnector size 00, 160 A, bus-mounting (33 075)



### Description

#### Article

Part No.: 33 075

QUADRON® 60Classic

NH fuse switch-disconnector size 00, 160 A, bus-mounting  
connection box terminal, outgoing terminal bottom/top  
suitable for 5-pole system

for busbars 12, 15, 20, 25, 30 x 5, 10 and section busbars

#### System

60Classic

Product group 09

Subgroup 24

pack size 1

EAN 4021267330750

## Advantages of the product

CrossLink® adapter technology

Fast and safe conversion of the connection for top or bottom; the parts under voltage remain shock protected

Simple and safe clicking into place and making contact

Safe connection through shock protection split into two

Busbar supports for flat busbars can be mounted above each other

Catalog page 2015 : 2/21, 7/3

eCl@ss 6.1 27142108

eCl@ss 7.1 27142108

ETIM 4.0 EC001040

ETIM 5.0 EC001040

## Approvals

### Standards

IEC 60947-1:2007 + A1:2010 + A2:2014

IEC 60947-3:2008 + A1:2012

### Approvals

IEC (CB), UL, Germanischer Lloyd, VDE, CCC



for UL feeder circuits >250V

Type number: QCB-NH00

UL file: E230163, UL category (for USA): IZLT2 <http://www.ul.com>

CCC certificate: 2010010302403934

## Product data

### Electrical data

Rated current (IEC): 160 A

Rated voltage (IEC) AC: 690 V

Rated voltage (IEC) DC: 440 V

Rated current (UL): 160 A  
Rated voltage (UL) AC: 600 V

Utilisation category AC-21B (690V)  
AC (IEC 60947-3) : AC-22B (500V)  
AC-20B (1000V) at pollution degree 2

visible information required if used at more than 690V AC or 160A: do not switch under load

Utilisation category DC specifications: 2 current paths (L1,L3) in series  
DC (IEC 60947-3) : DC-21B (220V)  
DC-21B (440V/100A)  
DC-22B (220V/63A)  
DC-20B (1000V) at pollution degree 2

visible information required if used at more than 440V DC or 160A: do not switch under load

Power dissipation:

The power dissipation at a typical load of 80% of the rated current results to 11.3 W.  
(The power dissipation for operation with rated current would be 17.7 W.)

rated isolation voltage  $U_i$  (AC): 800  
V

Rated surge voltage  $U_{imp}$  : 6 kV

max. permitted voltage (IEC) AC: 800  
V

max. permitted voltage (IEC) DC: 800  
V

cond. rated short-circuit current with fuses: 50 kA / 690V

approved with fuse links of characteristics: gG

SCCR: 100 kA

for fuse links IEC 60269-2 / DIN VDE 0636-2 size 00 up to 12W power dissipation

Special operating conditions corresponding to IEC / EN 61439-1 may yield to faulty activations of pilot switches and fuse monitors. The operating conditions have to be considered for the analysis of status signals.

Entsprechend den angegebenen AC- und DC- Schalteigenschaften und unter Berücksichtigung der Überlastbedingungen, sind gewisse Abstände zu geerdeten Metallteilen einzuhalten. Nähere Informationen auf Anfrage.

Bei Dauerbetrieb von mehreren Geräten nebeneinander ist der Bemessungsbelastungsfaktor nach VDE 0660 Teil 500 / EN60439-1, Tabelle 1 zu beachten.

System component: degree of protection IP30 at front as per DIN EN 60529, degree of protection near terminal depends on installation, adapter module: front side degree of protection IP20 as per DIN EN 60529 (finger-safe)

### **Mechanical data**

W x H x D: 106 x 200 x 97

Weight: 100 kg/100

Poles: 3-pole

for busbars: 12, 15, 20, 25, 30 x 5, 10 and section busbars

front degree of protection: IP30

Busbar connector: externally tensioned contacting, convenient click mechanism, simple conversion of the combination bases from 5 to 10mm-thick busbars

### **Terminal points**

Box terminal:

1,5 -70mm<sup>2</sup> flexible cables, directly or with wire-end ferrules\*, depending on contour of the insulated lead 95mm<sup>2</sup> could be connectable

1,5 -10mm<sup>2</sup> solid round

16 -70mm<sup>2</sup> stranded round

2x10mm<sup>2</sup>, 2x16mm<sup>2</sup> and 2x25mm<sup>2</sup> flexible with wire-end ferrules, identical cables placed side by side, crimping square

2x 10-35mm<sup>2</sup> flexible identical cables placed side by side

1a. Cu. 9-13 mm wide

Terminal space 13mm x 13mm

(\*flexible cables of maximum cross-section may not fit when using wire-end ferrule)

für Anwendungen nach UL :

nur Cu-Leitungen stranded/solid nach UL 486E

AWG 12 - AWG 2/0

Md 5,0 - 6,0 Nm / 44 - 53 lb.in.

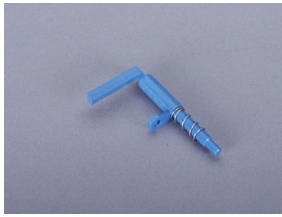
## Material properties

Main body:	temperature stability 125°C, self-extinguishing in acc. to UL 94, creepage resistance CTI 600, halogen-free
Shock protection cover:	temperature stability 125°C, self-extinguishing in acc. to UL 94, creepage resistance CTI 200
Handle:	temperature stability 125°C, self-extinguishing in acc. to UL 94, creepage resistance CTI 200
Adapter plate:	temperature stability 125°C, self-extinguishing in acc. to UL 94, creepage resistance CTI 600, halogen-free
Contacts:	spring-loaded copper contacts, silver plated

## Version

Variant with M8 connection screws: 33079

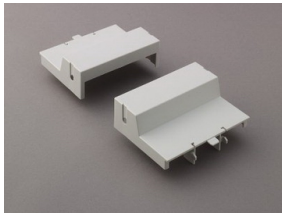
## Accessories



**03 849**  
lid interlock  
for sealing wire  
Size 00



**33 156**  
pilot switch  
changeover 250 V AC / 5 A; 30 V DC / 4 A



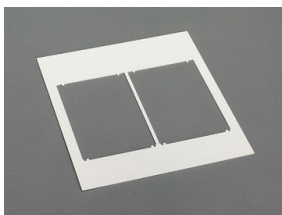
**33 315**  
trim cover, 2 parts  
for NH-LTS size 00  
size 00



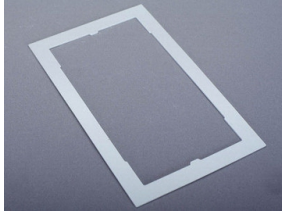
**33 317**  
trim strip  
for NH-LTS size 00  
size 00



**33 915**  
connection for auxiliary line, for box terminal  
flat connector DIN EN 61210 6,3x0,8  
NH 00



**78 105**  
Trim frame, double  
232 x 210, not for 33221, 33222  
size 00



**78 893**

Trim frame, single

130 x 210, not for 33221, 33222

size 00



**79 811**

cover for cable lugs, attachable top/bottom

for 33 200, 33 208, 33 329, 33 394, 33 398, 33 420

NH 00