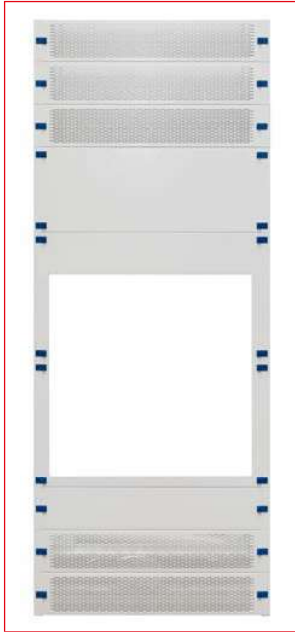


## Modular Chassis for HRC Fields

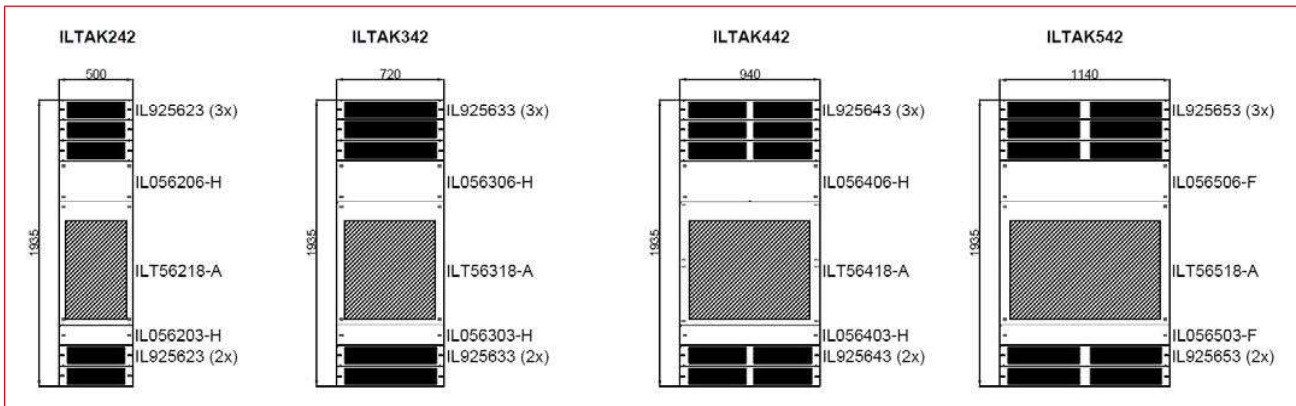


ILTAK342

### Schrack-Info

- Modular chassis with HRC in-line fuse switch cut-outs for the entire Modul 2000TT height in the enclosure widths 602 mm, 822 mm, 1042 mm and 1242 mm
- **ILTAK242** can be installed in:
  - ILT20800-A
  - ILT21250-A
- **ILTAK342** can be installed in:
  - ILT30800-A
  - ILT31250-A
- **ILTAK442** can be installed in:
  - ILT40800-A
  - ILT41250-A
- **ILTAK542** can be installed in:
  - ILT50800-A
  - ILT51250-A
- Material front plates: 1.5 mm sheet steel
- Color front plates: RAL7035 (Light grey)

## Article Overview Modular Chassis for HRC Fields



DESCRIPTION	AVAILABLE	ORDER NO.
<b>Modular Chassis 602 mm</b>		
Modular chassis 2-42K complete, sheet steel		<b>ILTAK242</b>
<b>Modular Chassis 822 mm</b>		
Modular chassis 3-42K complete, sheet steel		<b>ILTAK342</b>
<b>Modular Chassis 1042 mm</b>		
Modular chassis 4-42K complete, sheet steel		<b>ILTAK442</b>
<b>Modular Chassis 1242 mm</b>		
Modular chassis 5-42K complete, sheet steel		<b>ILTAK542</b>